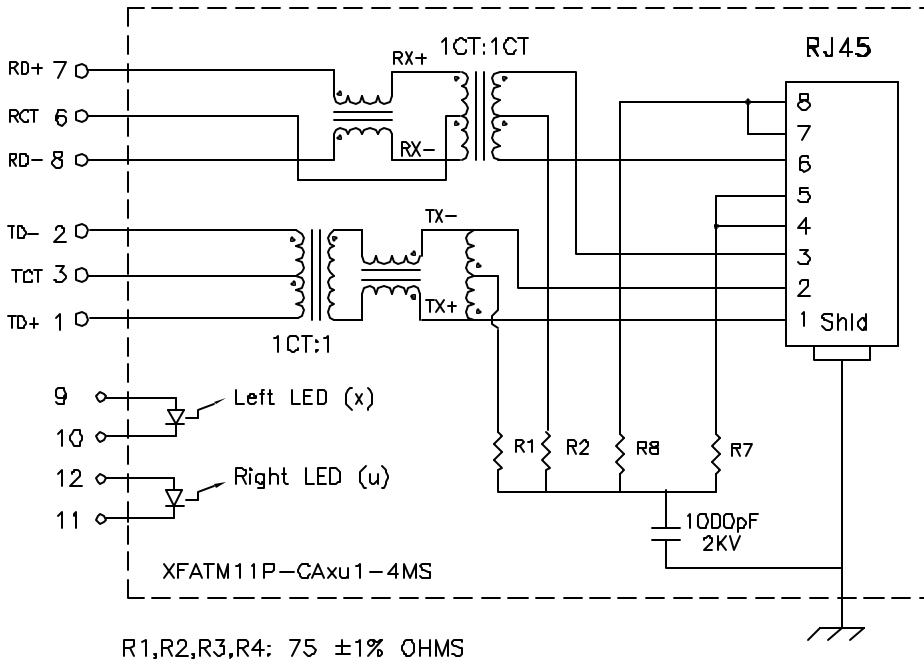


Schematic:



Electrical Specifications: @25°C

UTP Impedance: 100 OHMS
 Turns Ratio: TX : 1CT:1 (±3%) RX : 1CT:1CT (±3%)
 Isolation Voltage: 1500 VAC (Input to Output)
 Rise Time (10-90%): 2.5nS Typ
 LL: 0.4uH Max
 CW/W: 28pF Max
 UTP Side OCL: 350uH Minimum @100KHz, 100mV BmADC
 Insertion Loss (0.3MHz-100MHz): -1.0dB Maximum
 Return Loss: 1MHz-30MHz 40MHz 50MHz
 -18dB Typ -16dB Typ -14dB Typ 60MHz-80MHz
 CMRR: 30MHz 60MHz 100MHz
 -35dB Min -30dB Min -25dB Min -12dB Typ
 Crosstalk: 30MHz 60MHz 100MHz
 -50dB Min -40dB Min -35dB Min

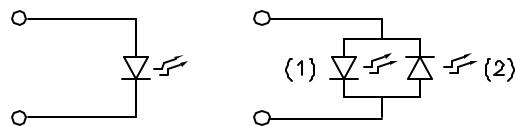
Complete the Combo P/N as follows:

Replace 'x' & 'u' in the part number with one of the LED color letters:

Y=Yellow
 G=Green
 A=Amber
 R=Red
 C=Green(1)/Amber(2) Bicolor
 D=Amber(1)/Green(2) Bicolor
 M=Green(1)/Yellow(2) Bicolor
 N=Yellow(1)/Green(2) Bicolor
 P=Red(1)/Green(2) Bicolor
 Q=Green(1)/Red(2) Bicolor

Single Color LED:

Bi-Color LED:



DOC. REV: A/1

Notes:

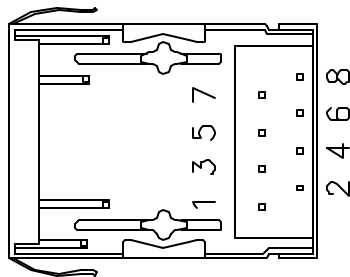
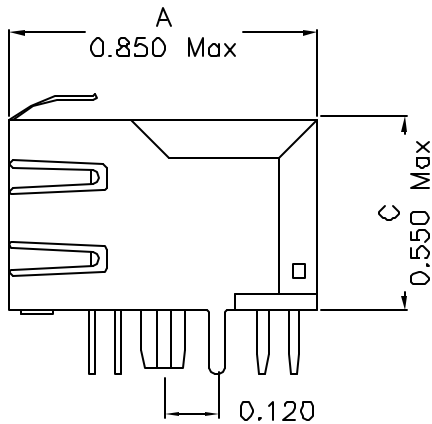
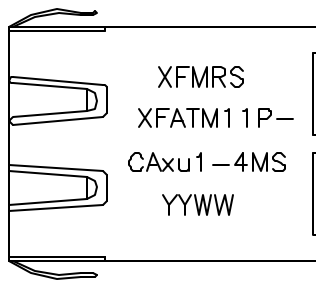
1. Solderability: Leads shall meet MIL-STD-202, Method 208D for solderability.
2. Flammability: UL94V-0
3. ASTM oxygen index: > 28%
4. Temperature rating: 155°C. UL file E151556
5. Operating Temperature Range: -40°C to +85°C

XFMRs Inc.	Title: SINGLE PORT COMBO		
	UNLESS OTHERWISE SPECIFIED TOLERANCES:	P/N: XFATM11P-CAXu1-4MS	REV. A
	.xxx ±0.010	DWN.	Kang Chen Jun-28-04
	Dimensions in Inch	CHK.	YK Liao Jun-28-04
SHEET 1 OF 2	APP.	J Ng Jun-28-04	

PROPRIETARY:

Document is the property of XFMRs Group & is not allowed to be duplicated without authorization.

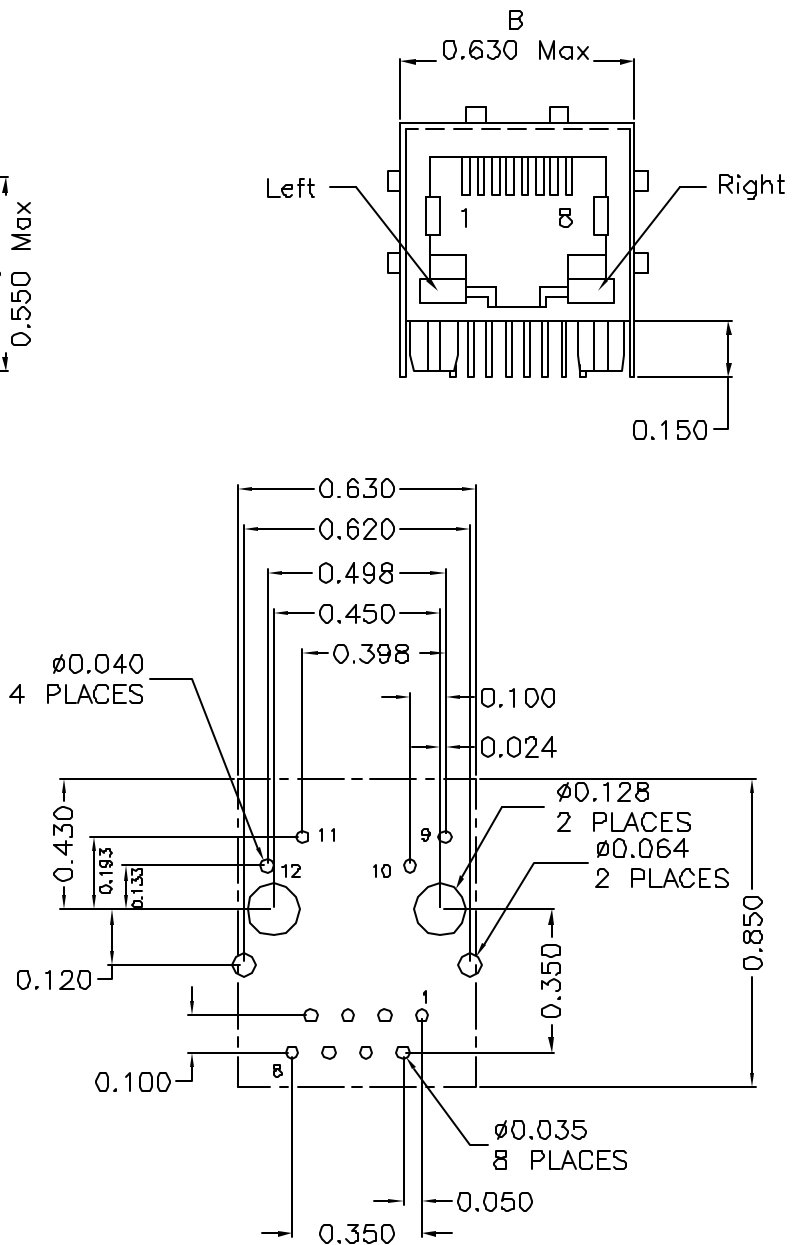
Mechanical Dimensions:



(BOTTOM VIEW)

Mounting Pattern:

(COMP SIDE)



XFMRS Inc.	Title: Mechanical Dimensions For CAxu1-4MS Series		
	UNLESS OTHERWISE SPECIFIED TOLERANCES: .xxx ±0.010 Dimensions in Inch	P/N: XFATM11P-CAxu1-4MS	REV. A
	DWN.	Kang Chen	Jun-28-04
	CHK.	YK Liao	Jun-28-04
SHEET 2 OF 2	APP.	J Ng	Jun-28-04

DOC. REV: A/1

PROPRIETARY:

Document is the property of XFMRS Group & is not allowed to be duplicated without authorization.